



Tyler Museum of Art's Teacher Newsletter: April 2024

Exhibitions



20th Annual High School Art Exhibition

The *High School Exhibition* presents 96 artworks from East Texas high school art students. The goal is to celebrate art education in the East Texas community.

When you visit the museum, you can vote for your favorite artwork. The votes will be counted throughout the span of the show, and the winner will be awarded Viewer's Choice. The exhibition is currently open and will close on May 19th, 2024.

The Artistic Legacy of E.M. "Buck" Schiwetz

The Artistic Legacy of E.M. "Buck" Schiwetz discusses the life and work of the artist Edward Muegge "Buck" Schiwetz. His compositions detail the animals, landscapes, and people of Texas through the art styles of Regionalism, Impressionism, Modernism, and Expressionism.

The exhibition is currently open and it will close on April 28, 2024.

For information on the artwork and the exhibition details, [click here!](#)

Educational Activities and Events:



Family Day: In Person

The Tyler Museum of Art's Family Day program is held every second Saturday of the month from 1:00pm – 4:00pm at the museum. The event will have art activities for children and students of all ages, art books to read for all ages, coloring pages of the museum's permanent collection, and snacks. All art activities are compliant with the TEKS. Additionally, all Family Day participants will get free admission to the exhibitions.

For April, the art activity will be a rainbow scratchboard activity. The event will be held at the museum on April 13, 2024 between 1:00pm – 4:00pm.

For more information on the Family Day Event, [click here!](#)

TMA Lesson Plans for Elementary, Middle School, and High School

Lesson Plan: Demetrius Willis, *The 7th Year Harvest*

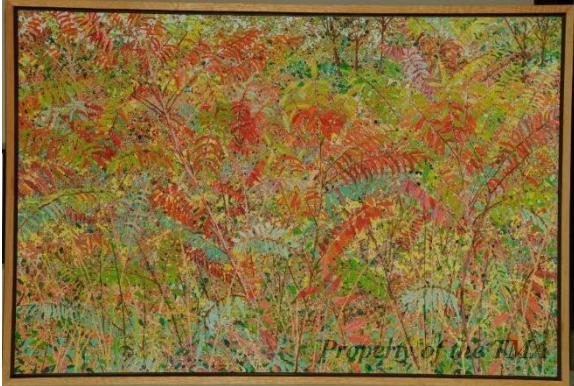


This lesson plan contains the National Learning Standards for Visual Arts and the Texas TEKS for Elementary, Middle, and High School art teachers. The students will study the painting methods of Franklin Demetrius Willis by focusing on his painting *The 7th Year Harvest*. The class will discuss and define genre paintings and the German Expressionist art movement. Then, the students will write a response to questions about the painting *The 7th Year Harvest*.

To access the lesson plan, [click here!](#)

For information on the artwork, [click here!](#)

**Tyler Museum of Art's
Elements and Principles of Design:
Lesson Plan and Activity**



This lesson plan and following activity define each of the principles and elements of design. Art examples of each element and principle are included with the vocabulary words. The artworks used in the lesson are from the Tyler Museum of Art's permanent collection.

To access the lesson plan, [click here!](#)

To access the activity, [click here!](#)

For information on the artwork, [click here!](#)

Schedule a School Tour with the Tyler Museum of Art



Planning a School Tour

If you are interested in scheduling a tour for your students at the museum, please contact ranthony@tylermuseum.org and provide the following information:

- The grade level of the visiting students;
- The number of students who will attend;
- And three days in your class schedule that are available for the tour.

For more information, [click here!](#)

Tyler Museum of Art Connection

For more information about the Tyler Museum of Art's events, activities, and educational tours:

Email: ranthony@tylermuseum.org

Tyler Museum of Art: Memberships



Members get free admission to all exhibitions plus access to members-only gallery openings and special events.

Free or discounted admission is available to hundreds of other museums through our North American Reciprocal Program (NARM) Card.

TMA Memberships are available at various levels, each providing support for our community-driven exhibitions and educational programs.

For more information, [click here!](#)

The next TMA Newsletter will be sent to teachers on: May 1st, 2024.

Visit our website at: <https://tylERMuseum.org/>

Visit our Facebook at: <https://www.facebook.com/TylerMuseumofArt>
